

## Reporte de Inspeccion Pre-Embarque

### EJEMPLO

General Information:	
<b>Report Number:</b>	PSI-LCG19012001
<b>Product name:</b>	Medium-high pressure lines
<b>Item #:</b>	Please see part 1
<b>PO#</b>	N/A
<b>Ordered quantity:</b>	Please see part 1
<b>Client name:</b>	
<b>Supplier name:</b>	
<b>Inspection Date:</b>	2019-1-24
<b>Departure time to the factory:</b>	7:30
<b>Arrival time:</b>	9:30
<b>Departure time:</b>	15:30
<b>Inspection location:</b>	Juancheng County, Heze City, Shandong Province



Inspection summary:		
Inspection Sections	Conform? (Y / N/ PENDING)	Remarks
1. Product quantity	Y	
2. Packing	PENDING	
3. Product conformity	Y	
4. Workmanship appearance / function	Y	
5. Reliability/function tests	Y	
6. Measurements	Y	

<b>Manufacturer Signature:</b>	Andy	<b>LCG signature:</b>	Annie Young
--------------------------------	------	-----------------------	-------------

## 1. Product quantity inspection:

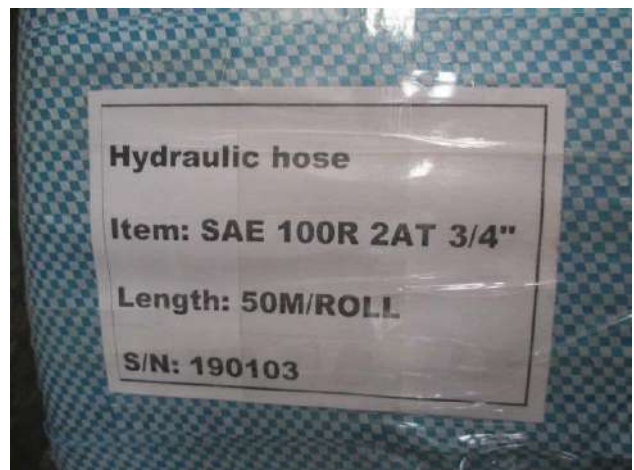
Model #	Model Name	Ordered Qty.	Available Qty.	% of Finished Products	Cartons Ordered	Packed Cartons	% of Finished Packing
SAE100 R2AT 3/4"	Medium-high pressure lines	2,000	2,000	100%	40 roll	40 roll	100%
SAE100 R2AT 1"	Medium-high pressure lines	3,000	3,000	100%	60 roll	60 roll	100%
SAE100 R5 3/16"	Medium-high pressure lines	1,000	1,000	100%	10 roll	10 roll	100%
SAE100 R5 13/32"	Medium-high pressure lines	1,000	1,000	100%	20 roll	20 roll	100%
SAE100 R5 1/2"	Medium-high pressure lines	1,000	1,000	100%	20 roll	20 roll	100%

## 2. Packing inspection:

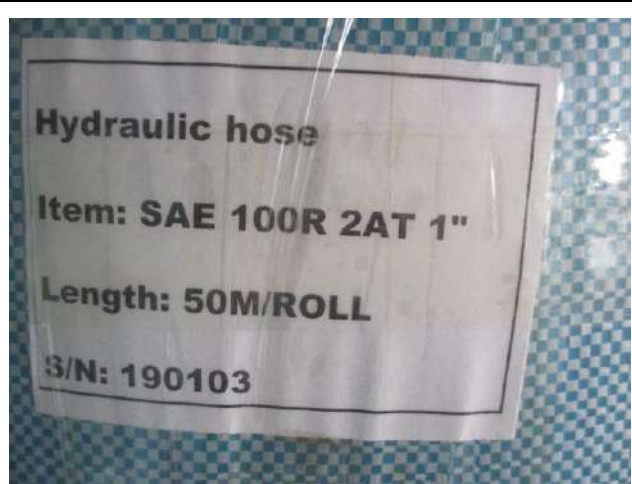
Test #	Spec Requirement	Conform? <small>(Y / N/ PENDING)</small>	Remarks
2.1	Packing method checking	Y	
2.2	Shipping mark checking	PENDING	No information from client.
2.3	Carton material checking	Y	Wrapping film.
2.4	Carton bar code label checking	N/A	
2.5	Product Manual (included in packing?)	N/A	
2.6	Warranty card (included in packing?)	N/A	

### Pictures:

**SAE100 R2AT 3/4"**



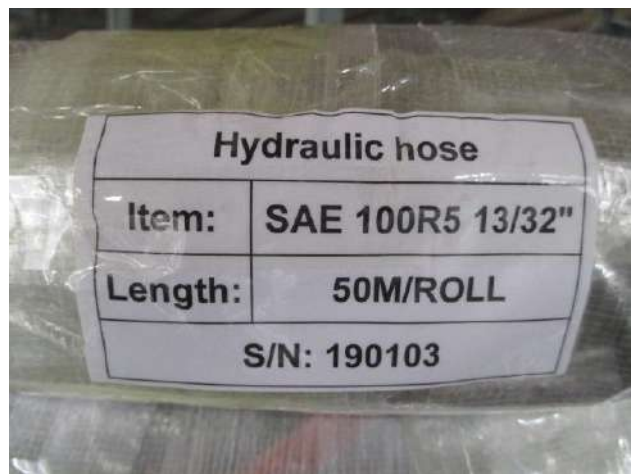
**SAE100 R2AT 1"**



**SAE100 R5 3/16"**



**SAE100 R5 13/32"**



**SAE100 R5 1/2"**



### 3. Product conformity inspection:

Test #	Testing Items	Conform? (Y / N / PENDING)	Remarks
3.1	Product style	Y	
3.2	Product color	Y	
3.3	Compared with sample which provide by factory	N/A	
3.4	Product bar code checking	N/A	
3.5	Country origin information found	N/A	
3.6	Material check - SAE 100 R5: one high tensile steel braids. - SAE100 R2AT: Two high tensile steel braids.	Y	
3.7	MSHA certificate check	N/A	Factory could not provide the certificate.





DIN EN853 2SN/SAE100 R2AT



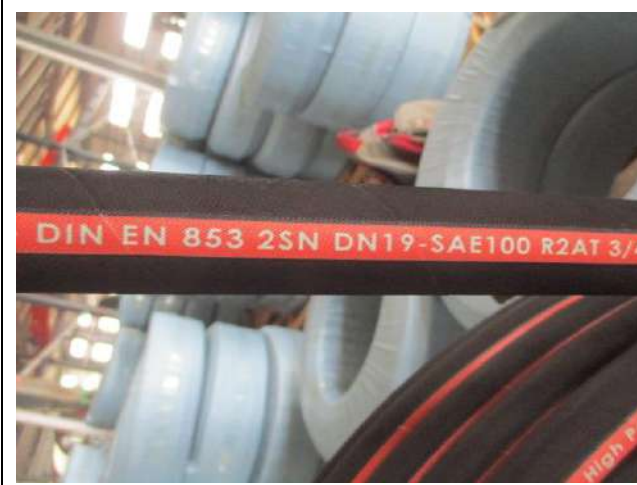
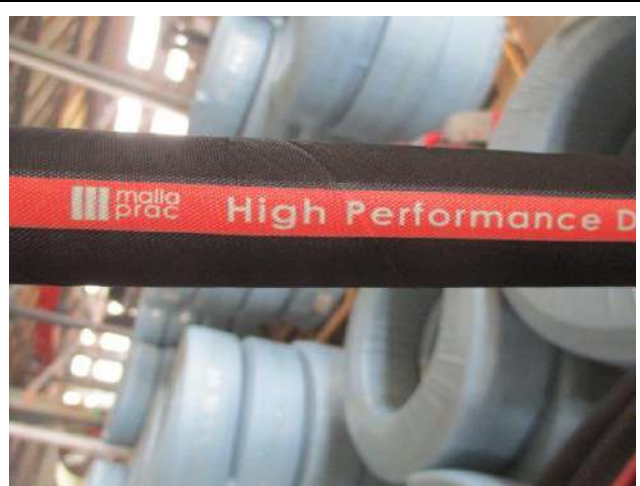
SAE100 R5



**Pictures:**

SAE100 R2AT 3/4"



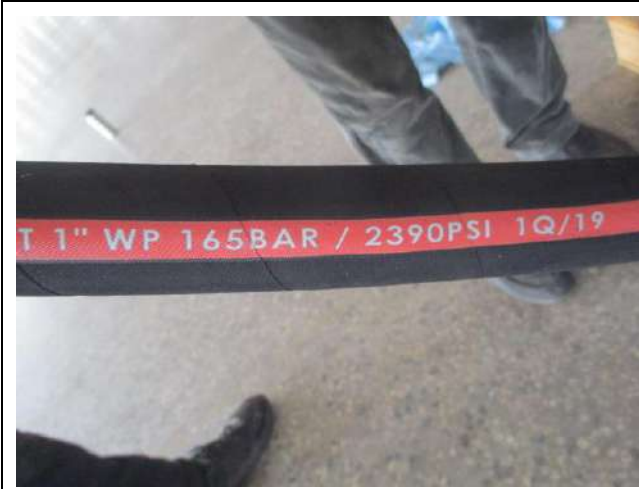


SAE100 R2AT 1"









SAE100 R5 3/16"





SAE100 R5 13/32"





SAE100 R5 1/2"





#### 4. Workmanship appearance / function inspection

##### Inspection Method Applied:

Inspection Standard: ANSI/ASQZ1.4 (MIL-STD-105E)

Sampling plan: Single, normal

Inspection level: G-II for workmanship checking; S-II for reliability/function tests


AQL (Accepted Quality Level): 0 for critical, 2.5 for major and 4.0 for minor defects

Model #	Sample size for Major defects check	Sample size for Minor defects check	Cartons Quantity	Selected Carton #
SAE100 R2AT 3/4"	5	5	5	N/A
SAE100 R2AT 1"	7	7	7	N/A
SAE100 R5 3/16"	2	2	2	N/A
SAE100 R5 13/32"	3	3	3	N/A
SAE100 R5 1/2"	3	3	3	N/A
<b>Total:</b>	20	20	20	

#	Defect description	Cri.	Maj.	Min.	Remarks
1	SAE100 R5 13/32"-Scratch,	0	0	1	
<b>Total defects:</b>		<b>0</b>	<b>0</b>	<b>1</b>	
<b>Maximum allowed defects:</b>		<b>0</b>	<b>1</b>	<b>2</b>	

<b>CONCLUSION:</b>	<b>Within AQL</b>
--------------------	-------------------

Pictures:	
SAE100 R5 13/32"-Scratch-Mi	-
	

5. Reliability & Function tests				
#	Testing Items	Sample Size	PASS/FAIL	Defect Description
5.1	Tape test on silk screen printed logos/text	2pcs/style	PASS	
5.2	Fire resistant test of cover	2pcs/style	PASS	
5.3	Height temperature test 100°C	2pcs/style	N/A	Factory could not provide equipment to do the test.
5.4	Low temperature test -40°C	2pcs/style	N/A	Factory could not provide equipment to do the test.

Pictures:	
Tape test on silk screen printed logos/text	







6. Measurements Data sheet:						
Test #	Testing items	Spec.	Sample #			
			1	2		
6.1	Inside diameter of hose: mm					
	SAE100 R2AT 3/4"	19	18.84	18.93		
	SAE100 R2AT 1"	25.4	25.53	26.23		
	SAE100 R5 3/16"	4.8	5.13	5.12		
	SAE100 R5 13/32"	10.3	10.35	10.41		
	SAE100 R5 1/2"	12.7	13.35	13.50		
6.2	Out diameter of hose: mm					
	SAE100 R2AT 3/4"	29.3	29.03	29.44		
	SAE100 R2AT 1"	38	36.66	36.68		
	SAE100 R5 3/16"	13.2	13.27	13.05		
	SAE100 R5 13/32"	19.5	18.85	18.83		
	SAE100 R5 1/2"	23.4	23.07	23.10		
6.3	Min. Burst pressure test: Mpa					
	SAE100 R2AT 3/4"	85	N/A	<b>Factory only allowed take one piece to do the test.</b>		
	SAE100 R2AT 1"	65	67			
	SAE100 R5 3/16"	84	N/A			
	SAE100 R5 13/32"	56	N/A			
	SAE100 R5 1/2"	48.8	N/A			
6.4	Min. Bend radius test: mm					
	SAE100 R2AT 3/4"	240	165	160		
	SAE100 R2AT 1"	300	185	180		
	SAE100 R5 3/16"	75	73	70		
	SAE100 R5 13/32"	115	105	100		

SAE100 R5 1/2"	140	120	125	
----------------	-----	-----	-----	--

**Pictures:**

**SAE100 R2AT 3/4"**

<b>Out diameter of hose: mm</b>	<b>Inside diameter of hose: mm</b>
---------------------------------	------------------------------------



**Min. Bend radius test: mm**



**SAE100 R2AT 1"**

<b>Out diameter of hose: mm</b>	<b>Inside diameter of hose: mm</b>
---------------------------------	------------------------------------



Min. Bend radius test: mm



SAE100 R5 3/16"

Out diameter of hose: mm

Inside diameter of hose: mm



Min. Bend radius test: mm



**SAE100 R5 13/32"**

**Out diameter of hose: mm**

**Inside diameter of hose: mm**



**Min. Bend radius test: mm**



**SAE100 R5 1/2"**

**Out diameter of hose: mm**

**Inside diameter of hose: mm**



Min. Bend radius test: mm



SAE100 R2AT 1"--Min. Burst pressure test: Mpa



Other related pictures:

Factory gate



Warehouse



## \*\*\*\*\*END OF THE REPORT\*\*\*\*\*

This document is neither a green light for shipment nor an inspection certificate. The final result of the inspection and authorization to ship the orders MUST be confirmed by the party entrusting LatinChina Group for the inspection.

The above result(s) reflect(s) LatinChina Group Limited's findings at the time and place of inspection. This report does not release the buyer or seller from contractual responsibilities, nor does it prejudice the buyer's right of claim toward the seller/supplier for compensation for any apparent and/or hidden defects not detected during inspection or occurring anytime thereafter.